

**Cape Breton
Regional Municipality**

BATTERY POINT
CONNECTOR PATH

BATTERY POINT CONNECTOR PATH PRELIMINARY DESIGN STUDY



KEY PLAN

DRAWING INDEX	
DWG.	DESCRIPTION
1	OVERALL OUTLINE OF PROPOSED PHASE DEVELOPMENT
2	PHASE 1
3	PHASE 2A
4	PHASE 2B
5	CROSS SECTIONS
6	CROSS SECTIONS
7	CROSS SECTIONS
8	PHASE 1 - LANDSCAPE PLAN
9	PHASE 2 - LANDSCAPE PLAN
10	TYPICAL DETAILS

DILLON PROJECT: 15-2766
DATE: MARCH 2016

FILENAME: C:\PROJECTS\WORKING DIRECTORY\ACTIVE\2019\2015-2766-02-SITE-DES REV2.DWG PLOTTED BY: FERGUSON, DANIEL
PLOT DATE: 2016-03-24 9:22:23 AM PLOT SCALE: 1/250 PLOT STYLE: DILLON-STD.ACT5



Conditions of Use
Verify elevations and/or dimensions on drawing prior to use.
Report any discrepancies to Dillon Consulting Limited.

Do not scale dimensions from drawing.

Do not modify drawing, re-use it, or use it for purposes other than those intended at the time of its preparation without prior written permission from Dillon Consulting Limited.



NOT FOR CONSTRUCTION



B	ISSUED FOR PRELIMINARY DESIGN STUDY	03/24/16	JRS		
A	ISSUED FOR INFORMATION	03/17/16	JRS		
No.	ISSUED FOR	DATE	BY		

DESIGN	JRS	REVIEWED BY	TAB
DRAWN	JRS	CHECKED BY	TAB
DATE	NOVEMBER 2015		
SCALE	1:1250		

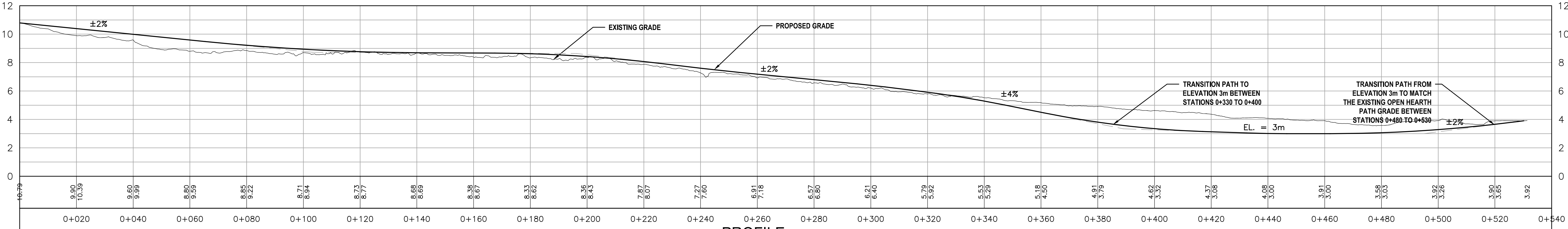
BATTERY POINT CONNECTOR PATH PRELIMINARY DESIGN STUDY		PROJECT NO. 15-2766
OVERALL OUTLINE OF PROPOSED PHASE DEVELOPMENT		SHEET NO. 1

DILLON CONSULTING LIMITED, 275 CHARLOTTE STREET, SYDNEY, NS, B1P 1G6
FILENAME: C:\PROJECTS\WORKING DIRECTORY\ACTIVE\2019\2015-2766-02-SITE-DES.REV2.DWG PLOTTED BY: FERGUSON, DANIEL
PLOT DATE: 2016-03-24 8:52:53 AM PLOT SCALE: 1:2500 PLOT STYLE: DILLON-STANDARD.CTB



PLAN
1:750

VERT: 1:150



PROFILE
1:750 (HOR.) 1:150 (VERT.)

Conditions of Use
Verify elevations and/or dimensions on drawing prior to use.
Report any discrepancies to Dillon Consulting Limited.
Do not scale dimensions from drawing.
Do not modify drawing, re-use it, or use it for purposes other than those intended at the time of its preparation without prior written permission from Dillon Consulting Limited.



NOT FOR CONSTRUCTION



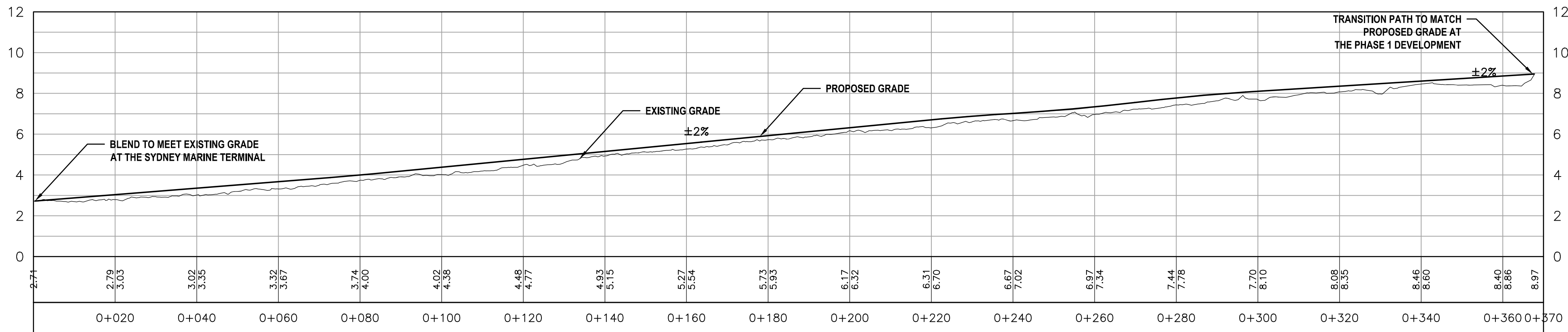
DESIGN	JRS	REVIEWED BY	TAB
DRAWN	JRS	CHECKED BY	TAB
DATE	NOVEMBER 2015	SCALE	1:750 1:150
B	ISSUED FOR PRELIMINARY DESIGN STUDY	03/24/16	JRS
A	ISSUED FOR INFORMATION	03/16/16	JRS
No.	ISSUED FOR	DATE	BY

BATTERY POINT CONNECTOR PATH PRELIMINARY DESIGN STUDY		PROJECT NO. 15-2766
PHASE 1		SHEET NO. 2

FILENAME: C:\PROJECTS\WORKING DIRECTORY\ACTIVE\2015\15-2766-02-SITE-DES REV2.DWG PLOTTED BY: FERGUSON, DANIEL
PLOT DATE: 2016-03-24 9:52:28 AM PLOT SCALE: 1:25.4 PLOT STYLE: DILLON-STD.ACT5B
DILLON CONSULTING LIMITED, 275 CHARLOTTE STREET, SYDNEY, NS, B1P 1G6



PLAN
1:750



PROFILE
1:750 (HOR.)/1:150 (VERT.)

Conditions of Use

Verify elevations and/or dimensions on drawing prior to use.
Report any discrepancies to Dillon Consulting Limited.

Do not scale dimensions from drawing.

Do not modify drawing, re-use it, or use it for purposes other than those intended at the time of its preparation without prior written permission from Dillon Consulting Limited.



NOT FOR CONSTRUCTION



B	ISSUED FOR PRELIMINARY DESIGN STUDY	03/24/16	JRS		
A	ISSUED FOR INFORMATION	03/16/16	JRS		
No.	ISSUED FOR	DATE	BY		

DESIGN	JRS	REVIEWED BY	TAB
DRAWN	JRS	CHECKED BY	TAB
DATE	NOVEMBER 2015		
SCALE	1:750		
	1:150		

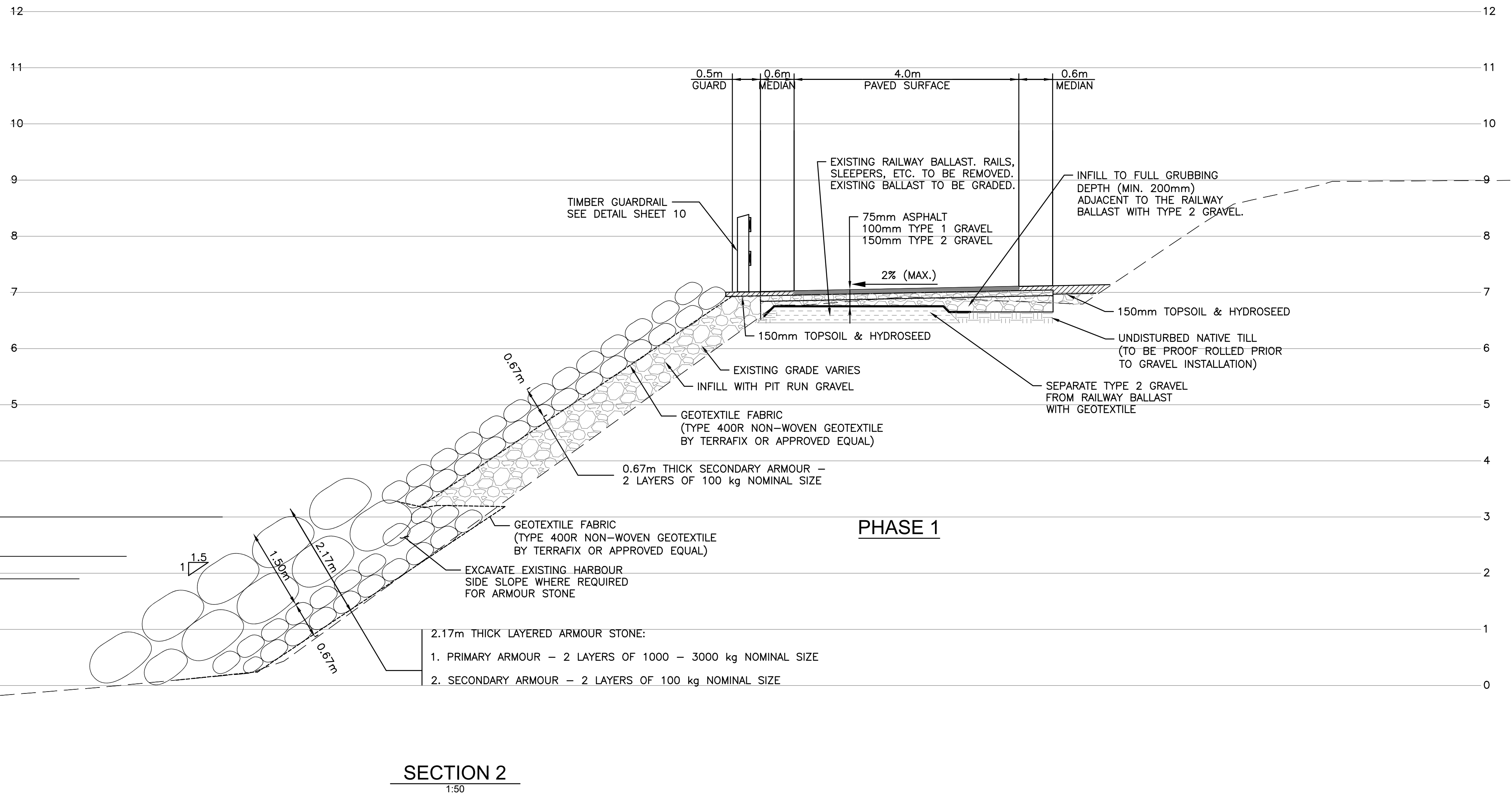
BATTERY POINT CONNECTOR PATH
PRELIMINARY DESIGN STUDY

PHASE 2B

PROJECT NO.
15-2766

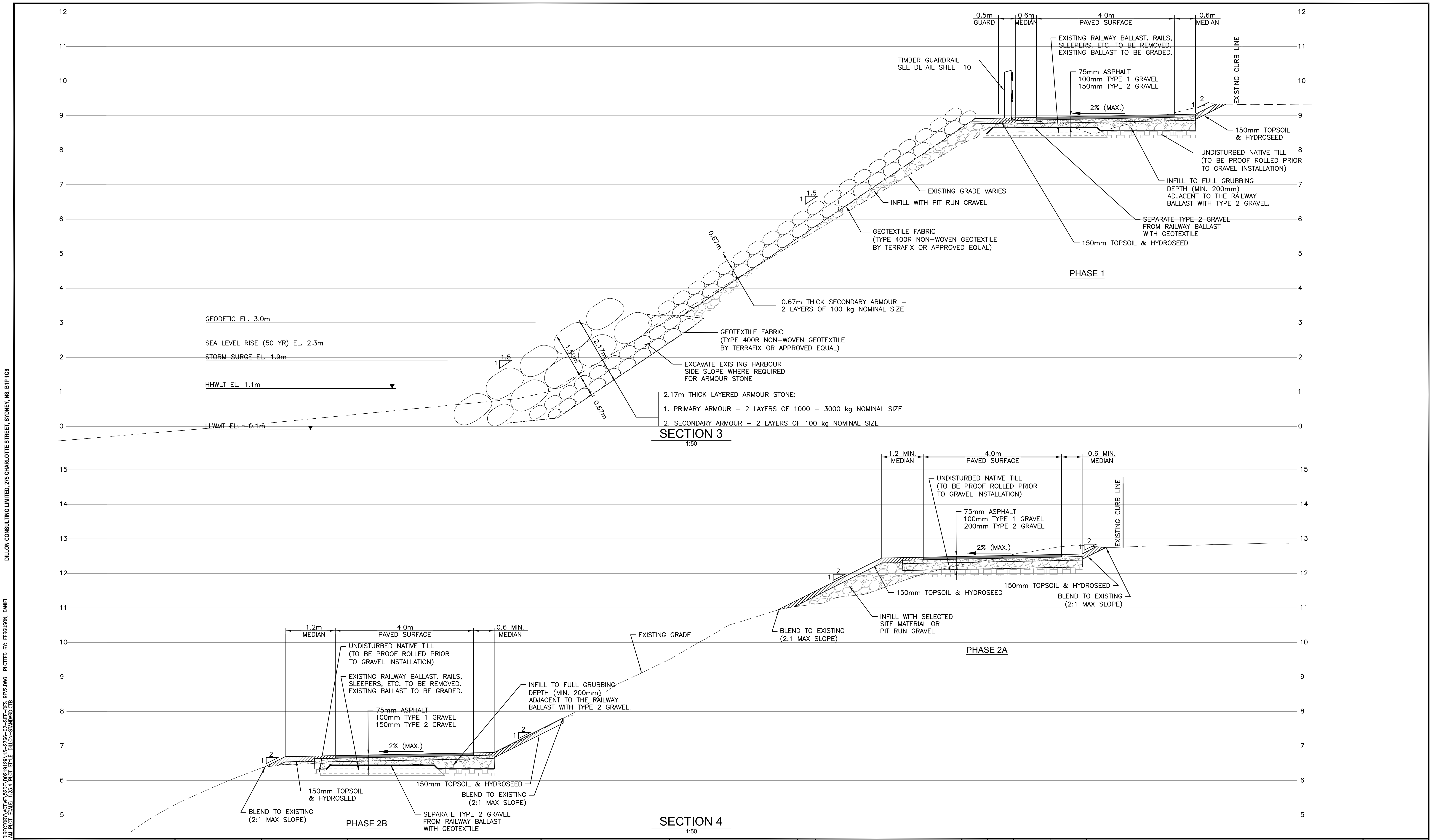
SHEET NO.

4



<p align="center">BATTERY POINT CONNECTOR PATH PRELIMINARY DESIGN STUDY</p>	<p>PROJECT NO. 15-2766</p>
<p align="center">CROSS SECTIONS</p>	<p>SHEET NO. 5</p>

FILENAME: C:\PROJECTS\WORKING DIRECTORY\ACTIVE\2019\2019-15-2766-02-SITE-DES REV2.DWG PLOTTED BY: FERGUSON, DANIEL
PLOT DATE: 2016-03-24 9:22:33 AM PLOT SCALE: 1:50.4 PLOT STYLE: DILLON-STANDARD.ctb



Conditions of Use

Verify elevations and/or dimensions on drawing prior to use.
Report any discrepancies to Dillon Consulting Limited.

Do not scale dimensions from drawing.

Do not modify drawing, re-use it, or use it for purposes other than those intended at the time of its preparation without prior written permission from Dillon Consulting Limited.



NOT FOR CONSTRUCTION



DESIGN	JRS	REVIEWED BY	TAB
DRAWN	JRS	CHECKED BY	TAB
DATE	NOVEMBER 2015		
SCALE	AS SHOWN		
B	ISSUED FOR PRELIMINARY DESIGN STUDY		03/24/16 JRS
A	ISSUED FOR INFORMATION		03/16/16 JRS
No.	ISSUED FOR	DATE	BY

BATTERY POINT CONNECTOR PATH PRELIMINARY DESIGN STUDY		PROJECT NO. 15-2766
CROSS SECTIONS		SHEET NO. 6



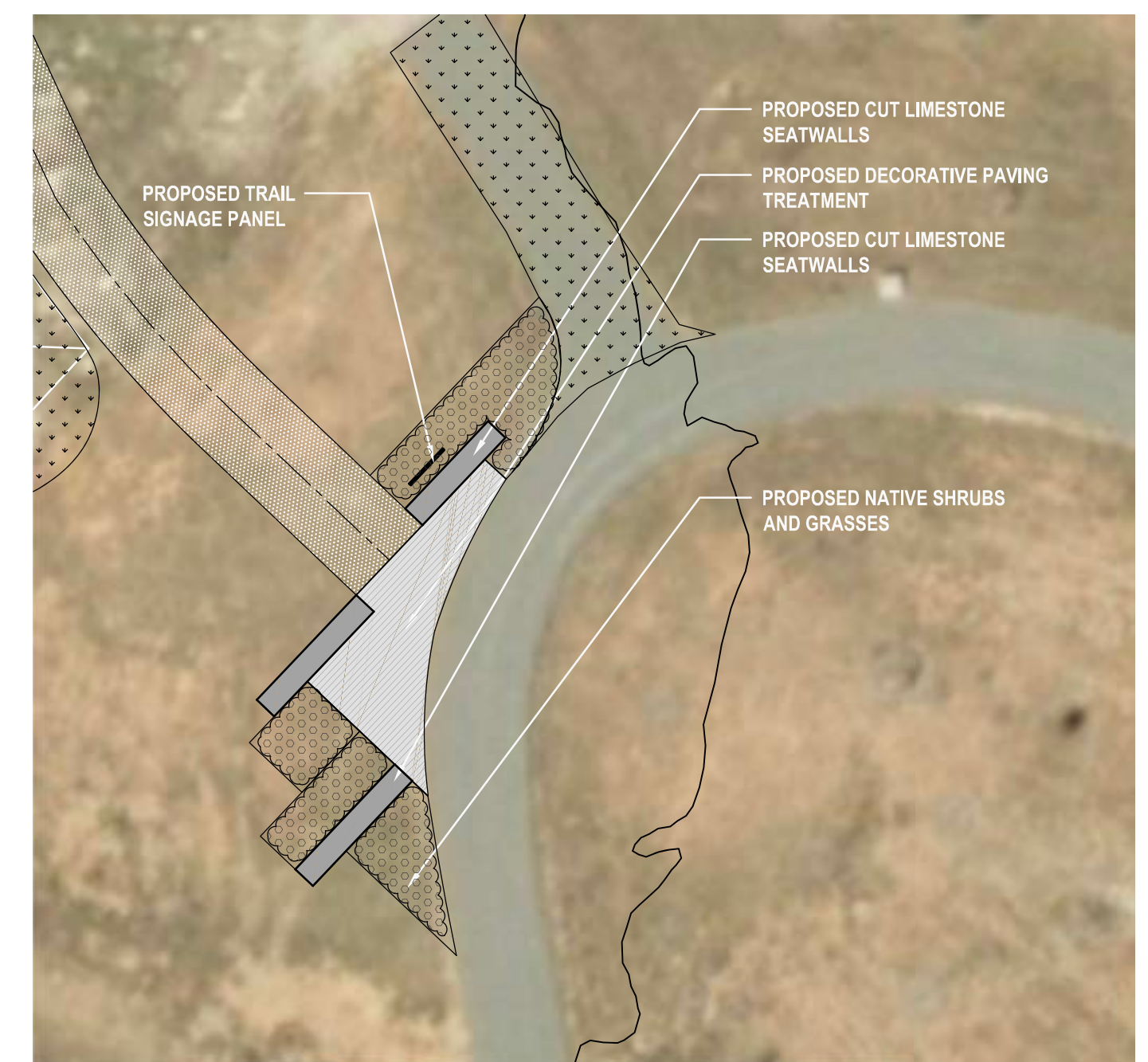
PLAN
1:750

- TYPICAL PLANT SPECIES LIST
STREET TREES:
> ACER RUBRUM (RED MAPLE)
> QUERCUS RUBRA (RED OAK)
> LIRIODENDRON TULIPIFERA (RED MAPLE)
> CELTIS OCCIDENTALIS (COMMON HACKBERRY)

- TREE WHIPS:
 > ACER SACCHARUM (SUGAR MAPLE)
 > QUERCUS RUBRA (RED OAK)
 > BLACK CHERRY (PRUNUS SEROTINA)
 > FRAXINUS NIGRA (BLACK ASH)
 > RHUS TYPHINA (SUMAC)
 > POPULUS GRANDIDENTATA (LARGE TOOTH ASPEN)
 > SORBUS AUCUPARIA (EUROPEAN MOUNTAIN ASH)

- SHRUBS:
- > ALNUS RUGOSA (SPECKLED ALDER)
- > ALNUS SERRULATA (SMOOTH ALDER)
- > AMELANCHIER ALNIFOLIA (SASKATOON BERRY)
- > ARONIA ARBUTIFOLIA (RED CHOKEBERRY)
- > SAMBUCUS CANADENSIS (AMERICAN ELDERBERRY)
- > VIBURNUM LENTAGO (NANNYBERRY)
- > CORNUS CERISEA (RED-OSIER DOGWOOD)
- > CORNUS RACEMOSA (GREY DOGWOOD)
- > CORNUS ALTERNIFOLIA (ALTERNATE-LEAF DOGWOOD)
- > SALIX DISCOLOR (PUSSY WILLOW)
- > SALIX EXIGUA (SANDBAR WILLOW)
- > SALICAE MOLLIIS (DOWNY HAWTHORN)
- > DIERVILLA LONICERA (BUSH HONEYSUCKLER)
- > PRUNUS VIRGINIANA (CHOKECHERRY)
- > PRUNUS PENSYLVANICA (PIN CHERRY)
- > MYRICAS PENSYLVANICA (NORTHERN BAYBERRY)

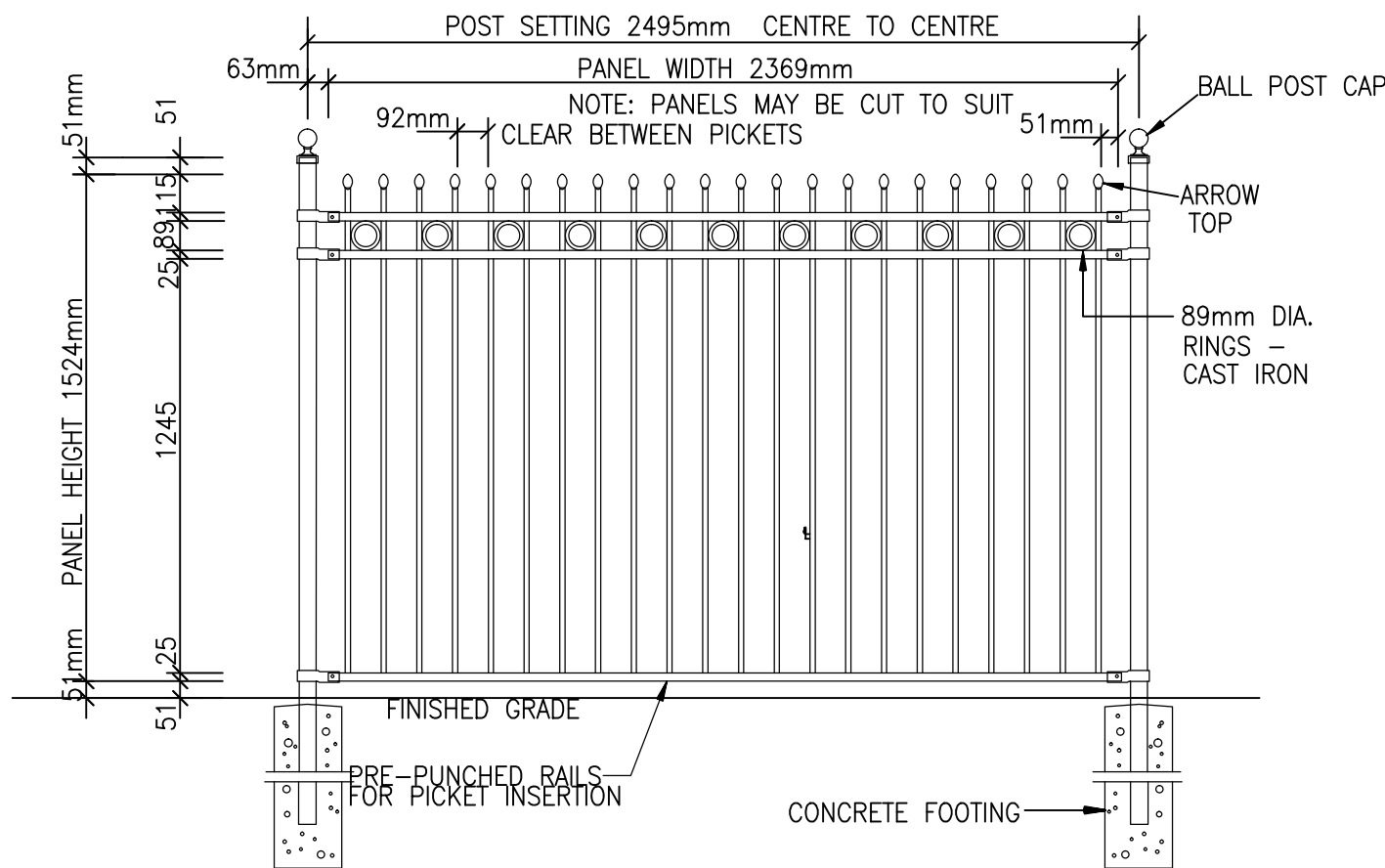
- GRASSES:
- > ANDROPOGON GERARDII (BIG BLUESTEM)
 - > BOUTELOGA GRACILIS (BLUE GRAMA)
 - > CALAMAGROSTIS CANADENSIS (BLUE-JOINT GRASS)
 - > DESCHAMPSIA CESPITOSA (TUFTED HAIR GRASS)
 - > PANICUM VIRGATUM (SWITCH GRASS)
 - > SPOROBOLUS HETEROLEPIS (PRAIRIE DROPSEED)



PLAN
1:250

<p>Conditions of Use</p> <p>Verify elevations and/or dimensions on drawing prior to use. Report any discrepancies to Dillon Consulting Limited.</p> <p>Do not scale dimensions from drawing.</p> <p>Do not modify drawing, re-use it, or use it for purposes other than those intended at the time of its preparation without prior written permission from Dillon Consulting Limited.</p>	<div>NOT FOR CONSTRUCTION</div>	<div> DILLON CONSULTING</div>	<table><tr><td></td><td></td><td></td><td></td><td>KP</td><td></td></tr><tr><td></td><td></td><td></td><td>DRAWN</td><td>CHECKED BY</td><td></td></tr><tr><td></td><td></td><td></td><td>KP</td><td></td><td></td></tr><tr><td></td><td></td><td></td><td>DATE</td><td colspan="2"></td></tr><tr><td></td><td></td><td></td><td colspan="3">NOVEMBER 2015</td></tr><tr><td>B</td><td>ISSUED FOR PRELIMINARY DESIGN STUDY</td><td>03/24/16</td><td>KP</td><td colspan="2"></td></tr><tr><td>A</td><td>ISSUED FOR INFORMATION</td><td>03/16/16</td><td>KP</td><td colspan="2"></td></tr><tr><td>No.</td><td>ISSUED FOR</td><td>DATE</td><td>BY</td><td colspan="2"></td></tr></table>								KP					DRAWN	CHECKED BY					KP						DATE						NOVEMBER 2015			B	ISSUED FOR PRELIMINARY DESIGN STUDY	03/24/16	KP			A	ISSUED FOR INFORMATION	03/16/16	KP			No.	ISSUED FOR	DATE	BY			<table><tr><td colspan="2">BATTERY POINT CONNECTOR PATH PRELIMINARY DESIGN STUDY</td><td>15-2766</td></tr><tr><td colspan="2">PHASE 1 - LANDSCAPE PLAN</td><td>SHEET NO. 8</td></tr></table>		BATTERY POINT CONNECTOR PATH PRELIMINARY DESIGN STUDY		15-2766	PHASE 1 - LANDSCAPE PLAN		SHEET NO. 8
							KP																																																							
						DRAWN	CHECKED BY																																																							
						KP																																																								
						DATE																																																								
						NOVEMBER 2015																																																								
			B	ISSUED FOR PRELIMINARY DESIGN STUDY	03/24/16	KP																																																								
			A	ISSUED FOR INFORMATION	03/16/16	KP																																																								
			No.	ISSUED FOR	DATE	BY																																																								
			BATTERY POINT CONNECTOR PATH PRELIMINARY DESIGN STUDY		15-2766																																																									
PHASE 1 - LANDSCAPE PLAN		SHEET NO. 8																																																												

FILENAME: C:\PROJECTS\WORKING DIRECTORY\ACTIVE 620\F\02\19\29\15-2766-02-SITE-DES REV2.DWG PLOTTED BY: FERGUSON, DANIEL
PLOT DATE: 2016-03-24 @ 9:25:55 AM PLOT SCALE: 1:25.4 PLOT STYLE: DILLON-STANDARD.ctb
DILLON CONSULTING LIMITED, 275 CHARLOTTE STREET, SYDNEY, NS, B1P 1G6



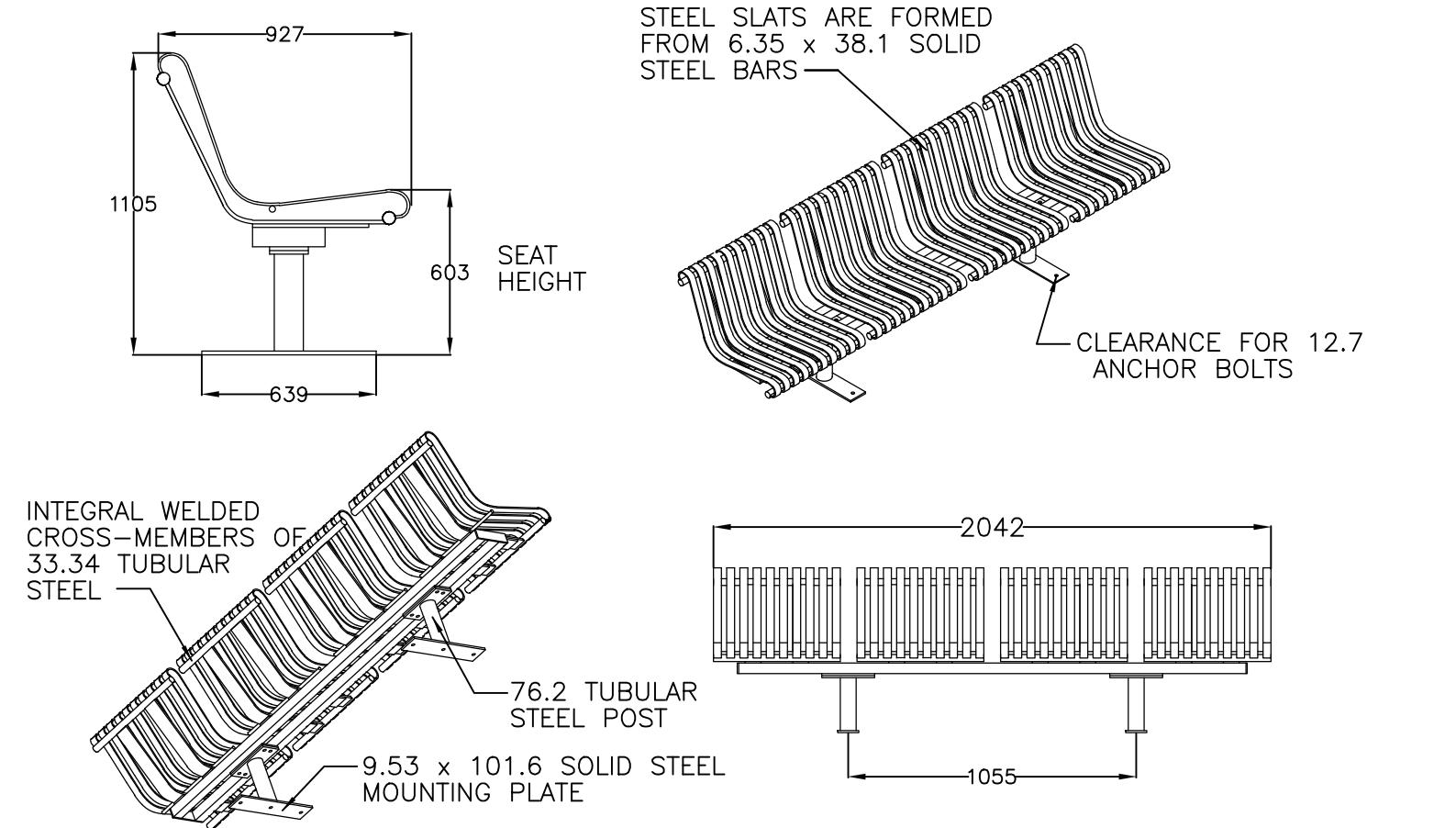
SPECIFICATIONS:

- POSTS, RAILS & PICKETS : COLD FORMED STEEL TUBING COLD FORMED STEEL TUBING INTERIOR & EXTERIOR GALVALUME COATING CHROMATE CONVERSION COATING ELECTROSTATICALLY APPLIED THERMALLY BONDED POLYESTER POWDER COATING MINIMUM FILM THICKNESS 2.5 mils
- POSTS: 51mm x 51mm, 16 GAUGE STANDARD POST
SPACING (CENTRE TO CENTRE): 2495mm
- POST FLANGES: 76mm x 152mm x 6mm
- POST CAP: BALL
RAILS: 25mm x 25mm, 14 GAUGE
PICKETS: 16mm x 16mm, 18 GAUGE
ARROW TOP
FITTINGS: 14 GAUGE STAMP FORGED
FACTORY FINISH AS ABOVE
WELDS: STAINLESS STEEL
- STANDARD PANEL WIDTH: 2369mm
PANEL HEIGHTS: 1524mm
NOTE: INCLUDE TAMPER PROOF NUTS FOR BRACKETS
COLOUR: SEMI-GLOSS BLACK
WARRANTY: 5 YEAR MAINTENANCE FREE

ALL ABOVE BY "IRON EAGLE" 2160 SERIES c/w PARTIAL RINGS

DECORATIVE FENCE DETAIL
N.T.S.

* ALL DIMENSIONS ARE IN MILLIMETERS *



AVAILABLE OPTIONS:
POWDER COATING: COLOUR:
VS GLOSS BLACK INCLUDE
OPTIONAL ARMRESTS

LENGTHS: STRAIGHT LENGTH FOR 4 SEATS
SEATS SEATING: RAIL-MOUNTED NRMS-24 AND
FRMS-24 MOUNTING: STANDARD SURFACE (AS SHOWN)

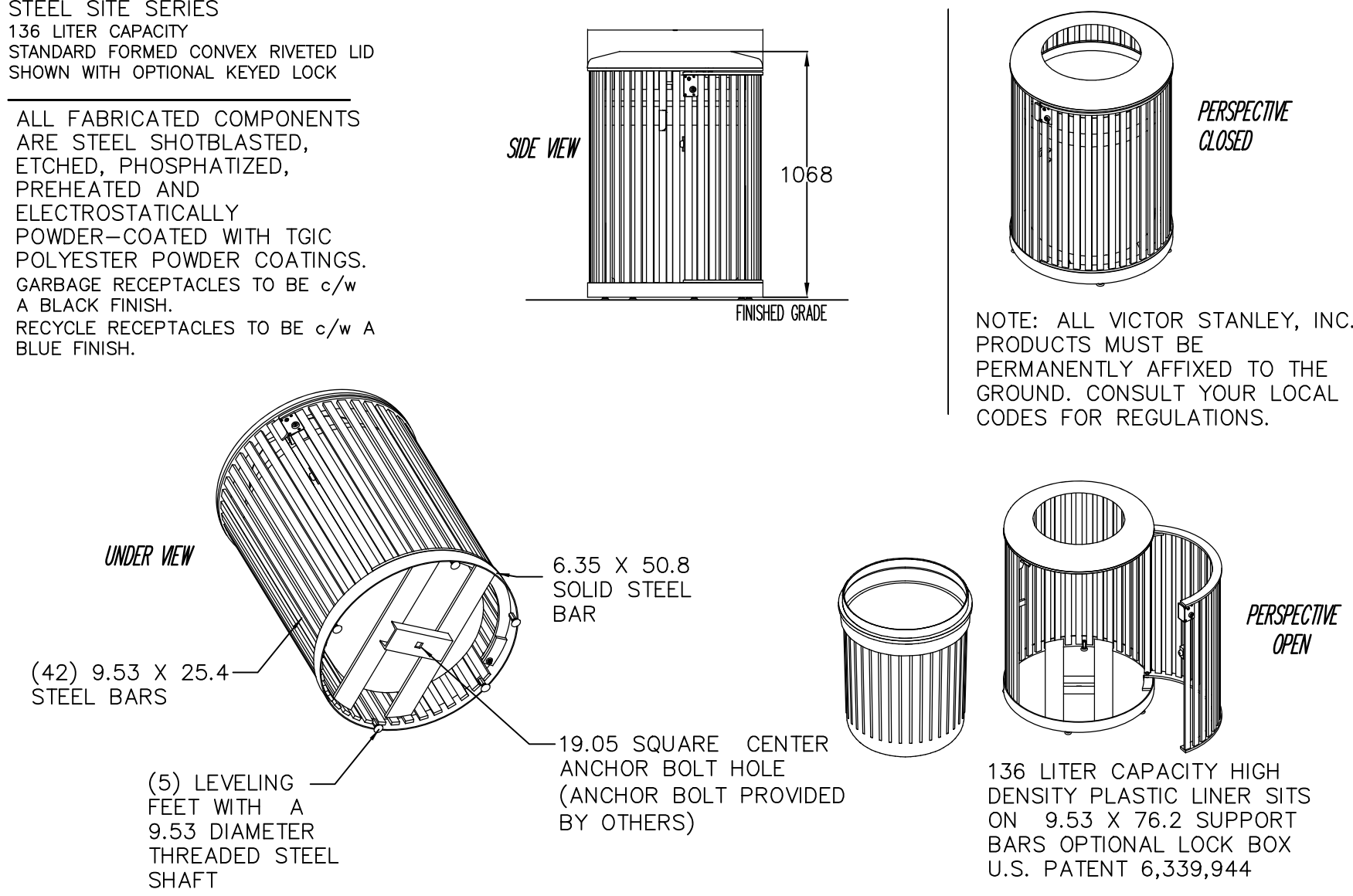
1. ALL FABRICATED METAL COMPONENTS ARE STEEL SHOTBLASTED, ETCHED, PHOSPHATIZED, PREHEATED, AND ELECTROSTATICALLY POWDER-COATED WITH T.G.I.C. POLYESTER POWDER COATINGS. PRODUCTS ARE FULLY CLEANED AND PRETREATED, PREHEATED AND COATED WHILE HOT TO FILL CREVICES AND BUILD COATING FILM. COATED PARTS ARE THEN FULLY CURED TO COATING MANUFACTURER'S SPECIFICATIONS. THE THICKNESS OF THE RESULTING FINISH COAT AVERAGES 8-10 MIL (200-250 MICRONS).
2. IT IS NOT RECOMMENDED TO LOCATE ANCHOR BOLTS UNTIL SEATING IS IN PLACE. THIS VICTOR STANLEY, INC. PRODUCT MUST BE PERMANENTLY AFFIXED TO THE GROUND. CONSULT YOUR LOCAL CODES FOR REGULATIONS.

BENCH DETAIL
N.T.S.

PRODUCT SPECIFICATIONS
NSDC-36
STEEL SITE SERIES
136 LITER CAPACITY
STANDARD FORMED CONVEX RIVETED LID
SHOWN WITH OPTIONAL KEYED LOCK

ALL FABRICATED COMPONENTS ARE STEEL SHOTBLASTED, ETCHED, PHOSPHATIZED, PREHEATED AND ELECTROSTATICALLY POWDER-COATED WITH TGIC POLYESTER POWDER COATINGS. GARBAGE RECEPTACLES TO BE c/w A BLACK FINISH. RECYCLE RECEPTACLES TO BE c/w A BLUE FINISH.

* ALL DIMENSIONS ARE IN MILLIMETERS *

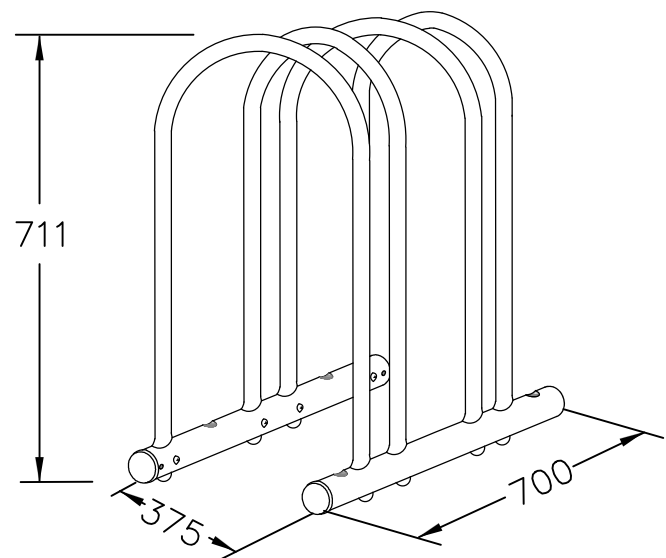


ALL SPECIFICATIONS ARE SUBJECT TO CHANGE. PLEASE CONTACT FACTORY FOR DETAILS.

THIS PRODUCT IS COVERED BY ONE OR MORE OF THE FOLLOWING U.S. PATENTS D450,166 S, D445,982 S, D476,454 S, D476,455 S AND THE CANADIAN DESIGN PATENTS 98101, 96108, 96159, 98103

GARBAGE/RECYCLE RECEPTACLES DETAIL
N.T.S.

PRODUCT SPECIFICATIONS
VELO-RACK CP-3
HIGH DENSITY BIKE RACK

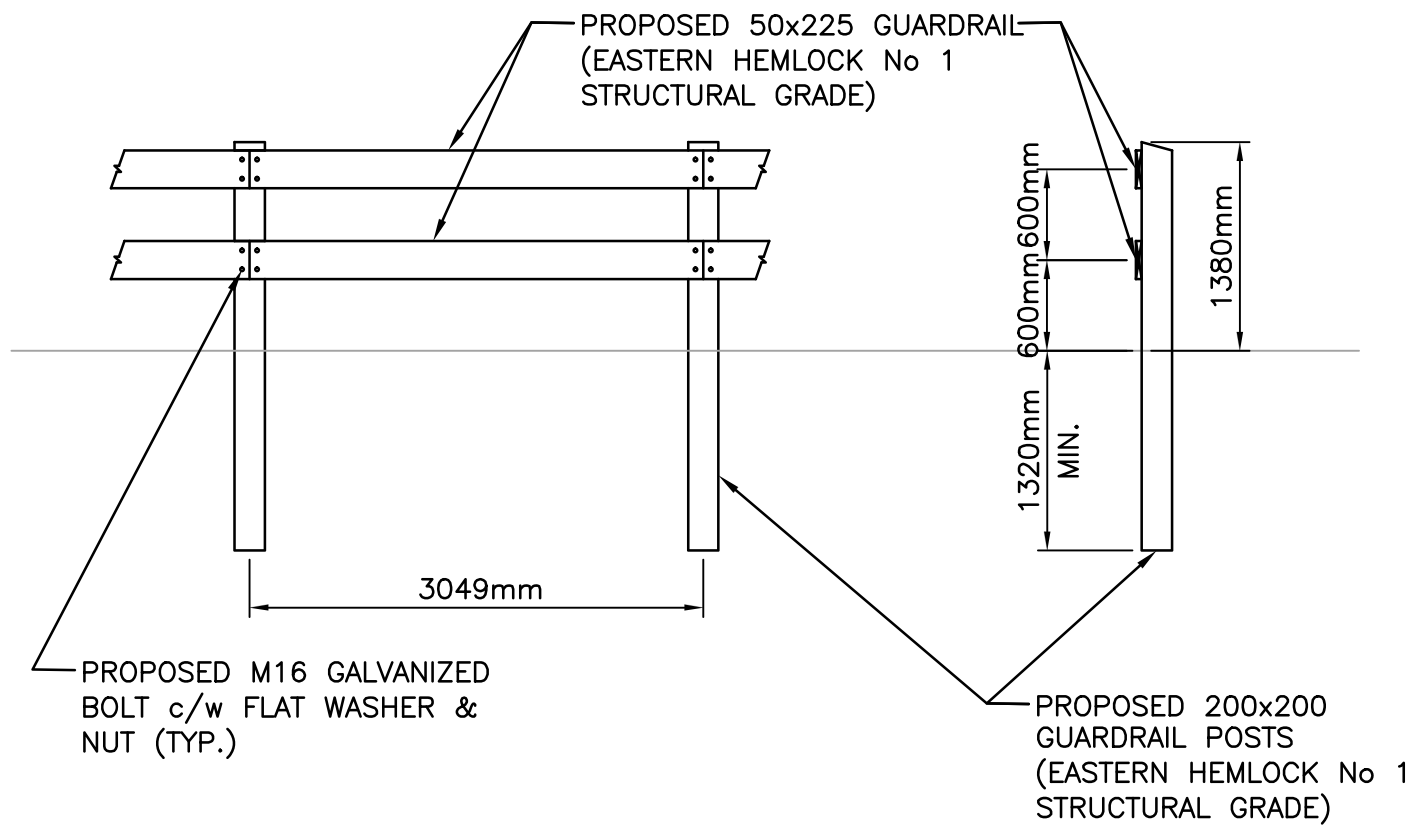


ALL FABRICATED COMPONENTS ARE HIGH STRENGTH STEEL FINISHED IN A BLACK POLYESTER POWDER COATING WITH A MECHANICAL ASSEMBLY.

UNIT CAN BE ANCHORED TO CONCRETE, GRASS OR ASPHALT.

* ALL DIMENSIONS ARE IN MILLIMETERS *

BIKE RACK DETAIL
N.T.S.



TIMBER GUARDRAIL DETAIL
N.T.S.

Conditions of Use

Verify elevations and/or dimensions on drawing prior to use. Report any discrepancies to Dillon Consulting Limited.

Do not scale dimensions from drawing.

Do not modify drawing, re-use it, or use it for purposes other than those intended at the time of its preparation without prior written permission from Dillon Consulting Limited.



NOT FOR CONSTRUCTION



DESIGN	JRS	REVIEWED BY	TAB
DRAWN	JRS	CHECKED BY	TAB
DATE	NOVEMBER 2015		
SCALE	1:750 1:150		
B	ISSUED FOR PRELIMINARY DESIGN STUDY		03/24/16 JRS
A	ISSUED FOR INFORMATION		03/16/16 JRS
No.	ISSUED FOR	DATE	BY

BATTERY POINT CONNECTOR PATH
PRELIMINARY DESIGN STUDY

PROJECT NO.
15-2766

TYPICAL DETAILS

SHEET NO.

10